

New Play Newsletter #332

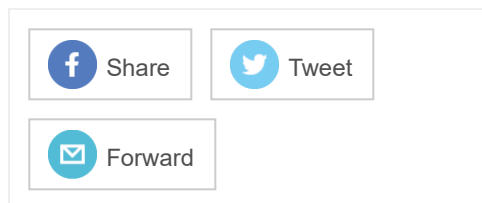
New England New Play Alliance <npaeditor@stagesource.org>

Tue 10/6/2020 11:01 AM

To: Karla <kmsorenson@hotmail.com>

New England New Play Alliance New Play Newsletter
Issue #332, October 6-13, 2020

[View this email in your browser](#)



Theatre Book of the Week

Dramatists Play Service presents
Long Lost
by Donald Margulies



**See *Script Giveaway!* for
a chance to win a copy.**

A funny, unsettling, ultimately moving play about the limits of compassion and filial obligation. When troubled Billy appears out of the blue in his estranged brother David's Wall Street office, he soon tries to reinsert himself into the comfortable life David has built with his philanthropist wife and college-age son. What does Billy really want? Can he be trusted? And how much can family bonds smooth over past rifts? [Buy the script.](#)



Congratulations to Riley Cohen, who won *Pirate Schmirate!* by Bert Bernardi (book and lyrics) and Justin Rugg (music) in last week's giveaway.

**This week, you could win
a copy of *Long Lost*
by Donald Margulies.**

You may enter once by sending an email with the subject line LOST by Wednesday, October 7 at 6:00 pm to npaeditor@stagesource.org.

Black Lives Matter

New Play Alliance stands with those who oppose racism and who, in seeking justice for George Floyd and countless other victims of racial injustice,

Featured New England Playwrights

You can read each playwright's featured play on [New Play Exchange](#), with an NPX membership. Should you choose not to join, we hope you still enjoy meeting these playwrights.

are demanding that America confront its shameful history and build an equitable future. Theatre can be an agent of change. NPA encourages the New England theatre community to meet this moment with courage, unity, and resolve. Please consider making a donation to [Black Lives Matter](#) or [NAACP Boston](#).

Crisis Resources for Artists

Closings and cancellations due to coronavirus, though necessary, are having a deep financial impact on people and organizations who create theatre. To help, or if you need help, these organizations are stepping up:

[Dramatists Guild COVID-19 Resources](#)
[Theatre Community Benevolent Fund](#)
[Dramatists Guild Foundation](#)
[The Actors Fund](#)
[StageSource COVID-19 Resources Listings](#)
[Fractured Atlas](#)
[Foundation for Contemporary Arts](#)

You can also help by not claiming a refund for tickets to cancelled shows. And, if there's a theatre company that holds a special place in your heart, consider donating to them.

Stage Source's New England Monologue Project

For Playwrights who live in New England:

Increased visibility to actors, directors and artistic staff.

Karla Sorenson She/Her/Hers Massachusetts Featured Play: [Sanctuary](#)



NPA: Is there a play or theatre experience that shaped you as a playwright?

KS: I've been most influenced by the plays of Henrik Ibsen. I first read some of his standard works, like *Hedda Gabler* and *The Dollhouse*, and appreciated the strong, complex female characters. But in plays like *Ghosts* and *The Master Builder*, I was attracted to the recurring theme of the inescapable influence of the past on the present and the playwright's modern-day take on the Aristotelian view of human tragedy. And while Ibsen's plays can have grand, overarching themes, they develop organically from the relationships among the characters. The big events that happen off stage (fires, falls, riots, suicides) are reflected in the inner turmoil of the characters on stage. It's this notion of the big revealing itself through the small and personal that I try to achieve in my work.

Synopsis of *Sanctuary*: At risk of deportation to a country she has never been to, Ruthie has taken sanctuary in a church, where she is visited by Chad, a high school student whose punishment for an unspecified transgression is to keep her company for an afternoon. Though seemingly very different people, they find common ground and gain each other's respect – and sympathy – in addition to a greater awareness of how the political affects the personal. [Read the play.](#)

Margie Semilof She/Her/Hers Massachusetts

For Actors who are members of StageSource:

Fresh material for auditions.

Click below to:

See more information on the StageSource website,

Submit your monologue or monologues.

The New England New Play Alliance

We're a group of organizations and companies and individual artists across New England banding together in order to:

1. Grow audiences for new plays.
2. Encourage more new play development and production.
3. Spread the word outside of Boston about plays/playwrights from Greater Boston and New England.

This newsletter is just one of the many projects we're undertaking to help achieve these goals. Other projects include data collection on audiences for new work, a travel fund for New England playwrights, and a New England New Play Fund.

Tell People About This List!

The more people who know about this list, the better. So please don't be shy about forwarding this email. Or send them to check out our web page at:

<http://www.stagesource.org/?page=NewPlayAlliance>



The **New England New Play Alliance** is a project sponsored/coordinated by [StageSource](#), your connection to theater in New England. StageSource programs connect organizations to artists, artists to jobs and audiences to communities.

Featured Play: Queen of the Coast



NPA: Is there a story from your childhood that explains who you are as a writer?

MS: I was raised by parents who were born during the depression, and as such, they grew up on escapist fare, such as the Marx Bros., Laurel and Hardy, and plays by Kaufman and Hart, or even Shirley Temple movies (barely scratching the surface here). In turn, I grew up watching these too, thanks to Saturday re-runs, and listening to their stories about how that genre played such an important role in maintaining everyone's mental health in bleak times. There are many voices far more capable than mine who have got the heavy lifting covered. Personally, I can't resist the big, ridiculous characters and the physical comedy of an early time. I am striving to get better at telling those types of stories for the sheer fun of it, plus I could use a little levity right about now.

Synopsis of *Queen of the Coast*: A claptrap seacoast Inn, two novice owner/managers, a washed up actress, her former husband-now-trans-woman, a misleading invitation, and a nor'easter – what could go wrong? In this dark comedy, self-centered Diana Knight decides to reconnect with her childhood sweetheart and estranged, former husband, Joe, who is now a trans woman named Zoe. As the storm rages, Diana, Zoe, and the poorly suited innkeepers, Cholly and Lizzy, reveal secrets and betrayals, and truths coming roaring out in all their awkward glory. [Read the play.](#)

Live Performance

Editor's Note: The New England New Play Alliance acknowledges that it may not be safe to open theaters during the coronavirus

Let Us Know!

Is there a New England playwright we should feature, or a podcast highlighting a New England playwrights or their work? Are you a publisher with a script by a playwright living in New England that you'd like to include in our giveaway? Contact us at npaeditor@stagesource.org. Issues go out every Tuesday.

New England New Play Alliance New Play Newsletter

Coordinators:

Lesley Moreau
Lisa Rafferty

Managing Editor:

David Beardsley

Editors:

Eric Cheung
Deirdre Girard
Nick Malakhov
David Reiffel

pandemic. Before attending in-person performances, we urge readers to evaluate venue safety measures and consider the risks to themselves and others.

The Wilbury Theatre Group

presents Fire Flowers and a Time Machine



**created in collaboration with
the performing artists**

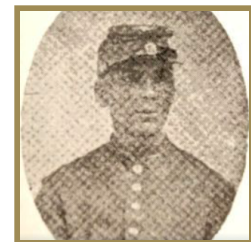
October 1-17

The Waterfire Arts Center (outside)
Providence, RI
directed by Shey Rivera Rios

A journey through time and space, *Fire Flowers and a Time Machine* (*Flores de Fuego y una Máquina del Tiempo*) is a bilingual outdoor production that puts audiences in touch with ancestors from the past, and our future descendants. Together these guides bring forth knowledge and magic through a story that weaves monologues, poetry, dance, and ritual to share with us the wisdom we will need as we continue the journey through the transformations of our Era. **Tickets:** \$20.

New Rep Theatre presents

The Charles W. Lenox Experience by Ken Green



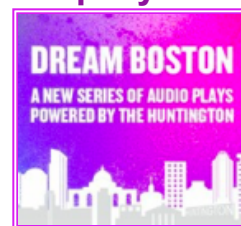
now-Nov. 20
Various sites
Watertown, MA
directed by Michael Ofori

New Rep has partnered with the Watertown Free Public Library and the Watertown Historical Society to bring you Watertown Historical Moving Plays, an immersive and educational theatrical experience that leads participants on a stroll through historical sites

in Watertown. In *The Charles W. Lenox Experience*, travel back to the Civil War era with Charles W. Lenox, a Black Watertown-based barber who enlisted as a private on February 28, 1863. Lenox will lead groups through significant stops in his life, such as the site of his barbershop and the Civil War monument. [Tickets: \\$20.](#)

Virtual Theatre and Podcasts

Huntington Theatre Company
presents
[Dream Boston](#)
now-October 28



Dream Boston is a series of short audio plays that asks local playwrights to imagine favorite locations, landmarks, and their friends in a future Boston, when we can once again meet and connect in our city. New performances are released each Wednesday.

Virtual Attendance

by Miranda ADEkoje

directed by Pascale Florestal

Two white women in their 20s are on their way to an exercise class in a gentrified Nubian Square. [Streaming from October 7.](#)

feeling now

by J. Sebastián Alberdi

directed by Caley Chase

Friends decide whether to part for the night after dancing at Machine, right outside Fenway Park on August 23, 2023. [Streaming from October 14.](#)

Echoes

by Patrick Gabridge

directed by Rosalind Bevan

Friends make a late-night visit to the Old State House on the anniversary of the Boston

Massacre on March 5, 2025. [Streaming from October 21.](#)

The Moment Before the Lights Went Out on the Rothkos

by John Kuntz

directed by Rebecca Bradshaw

Museum visitors encounter two Rothko paintings and discover the mystery of each other at the Harvard Art Museums on January 22, 2022. [Streaming from October 28.](#)

To watch previous episodes, [click here.](#)

Boston Podcast Players presents

[Cleanliness,](#)
[Godliness, and](#)
[Madness: A User's](#)
[Guide](#)

by Charlotte Meehan



Charlotte Meehan writes multimedia pieces that play with form and speak about today's issues, but she insists it isn't surreal but how she views the world. Her play *Cleanliness, Godliness, and Madness: A User's Guide* is a prime example. Written to be performed by her company, [Sleeping Weazel](#), it might seem like a broadside attack on Trumpism but it's rooted in Meehan's unique family history. [Stream the podcast.](#)

Copyright © 2020 New England New Play Alliance, All rights reserved.

You are receiving this e-mail because you have expressed interest in communications from the New England New Play Alliance and the development and production of new plays.

Our mailing address is:

New England New Play Alliance
StageSource, 15 Channel Center Street, Suite 103
Boston, MA 02210

[Add us to your address book](#)

[unsubscribe from this list](#) [update subscription preferences](#)



